

Supplemental Material

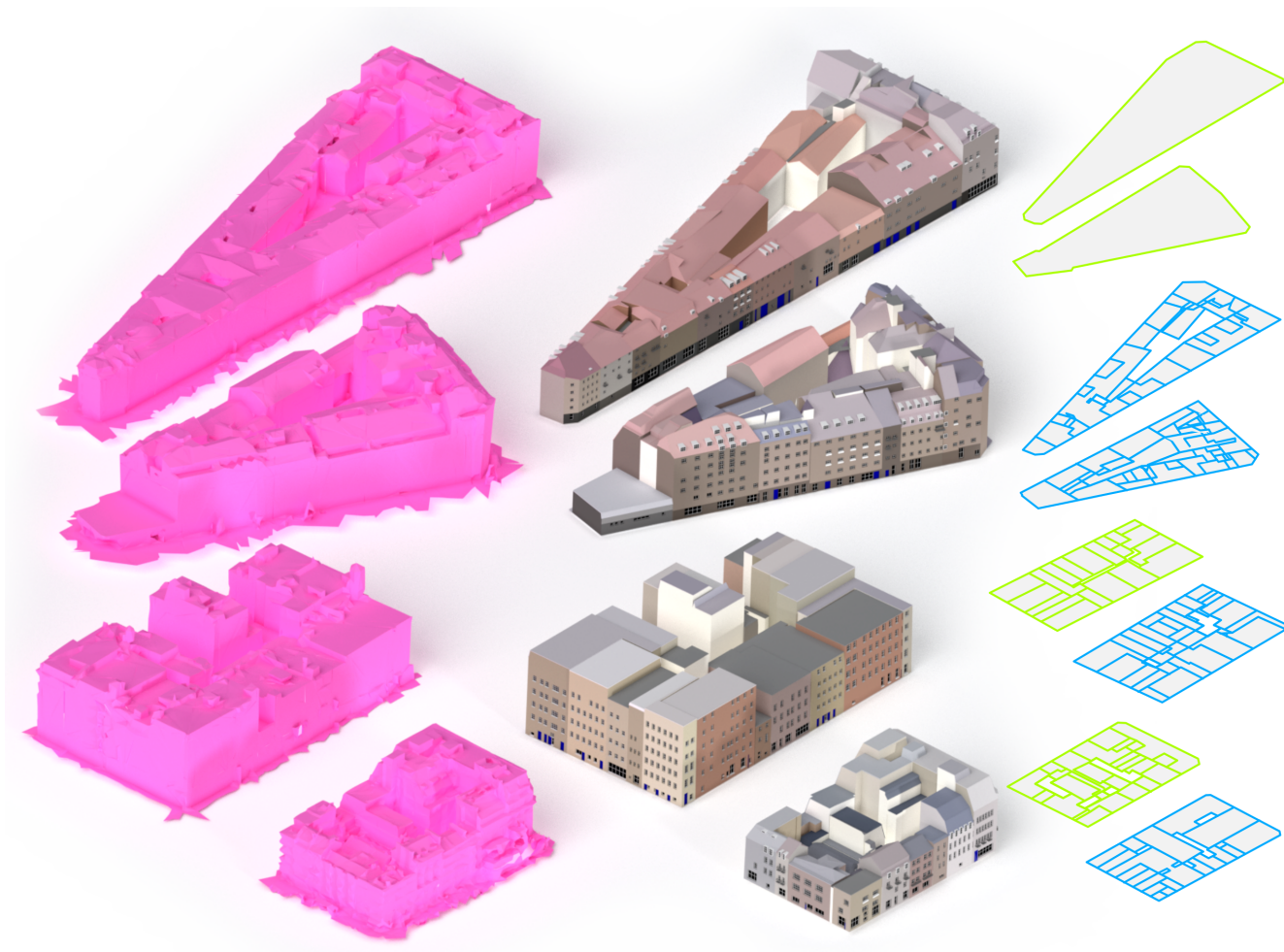


Figure 1: The input meshes for Figure 15 in Section 6 of the main paper.

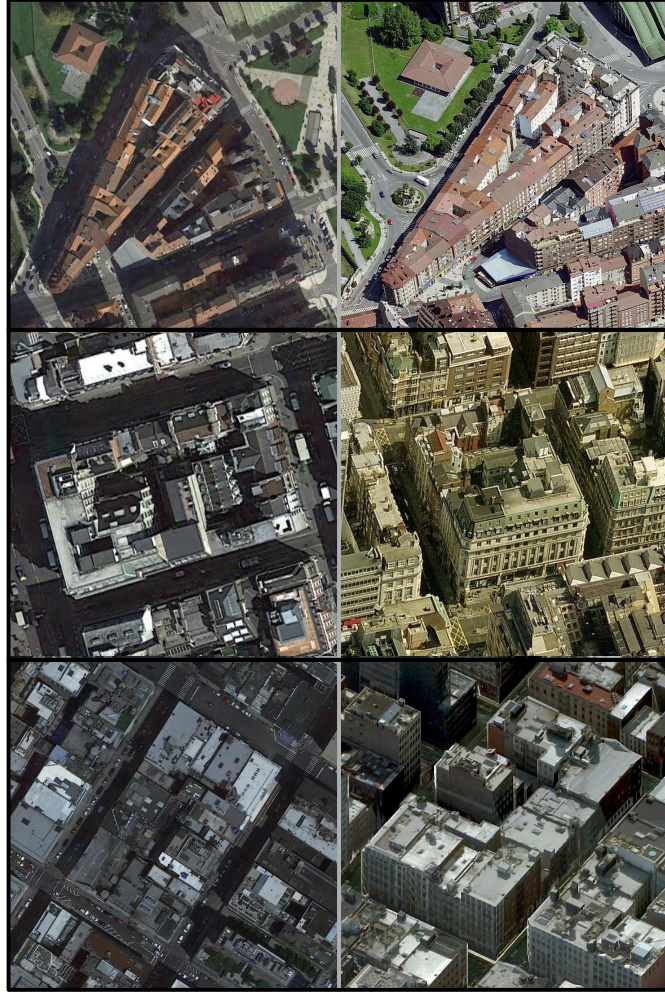


Figure 2: Reference images for Figure 15. Left column: Satellite aerial images. Right column: Orthographic photographic images. Rows: Oviedo, Manhattan and London. The Manhattan orthographic image is most likely photographic textures rendered onto a mesh.

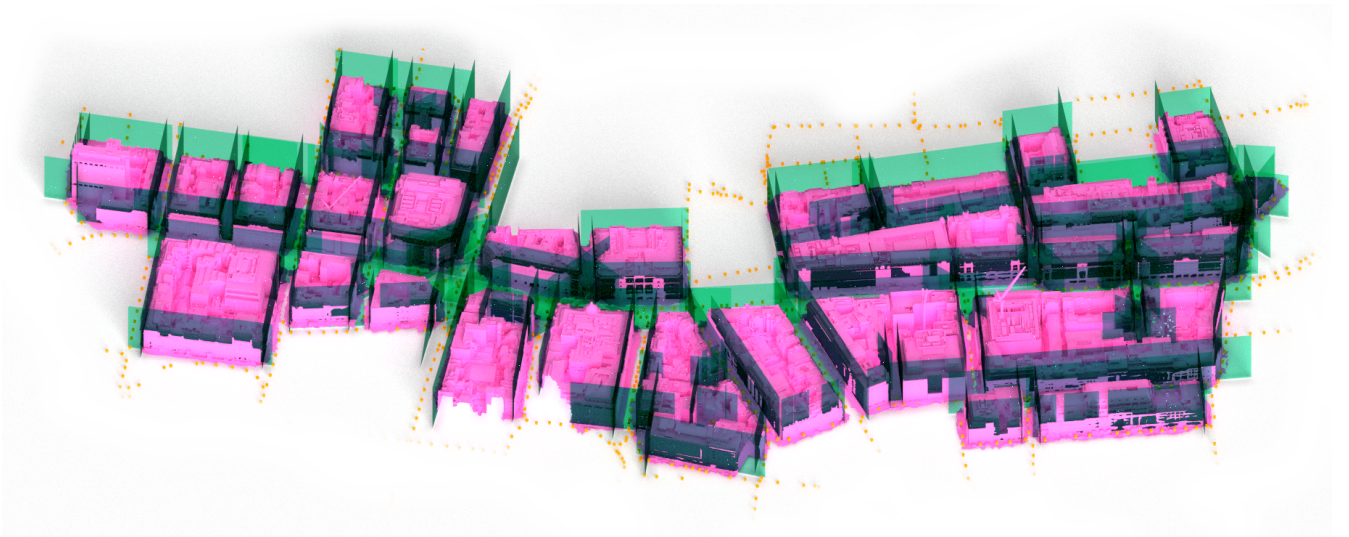


Figure 3: A visualization of some of the input data for Figure 16. The projected image planes are shown in green, the image centers as orange cubes, and the coarse meshes in pink. Note the intersections between the meshes and the image planes.